



First Time Installation Guide For Internet Explorer

The dealing system is a Java-based applet that utilizes Sun's Java Runtime Environment (JRE). First time users of the dealing software must install the JRE before attempting to login to the system.

The following instructions outline this automated installation process. Screen shots have been included to aid you during this process.

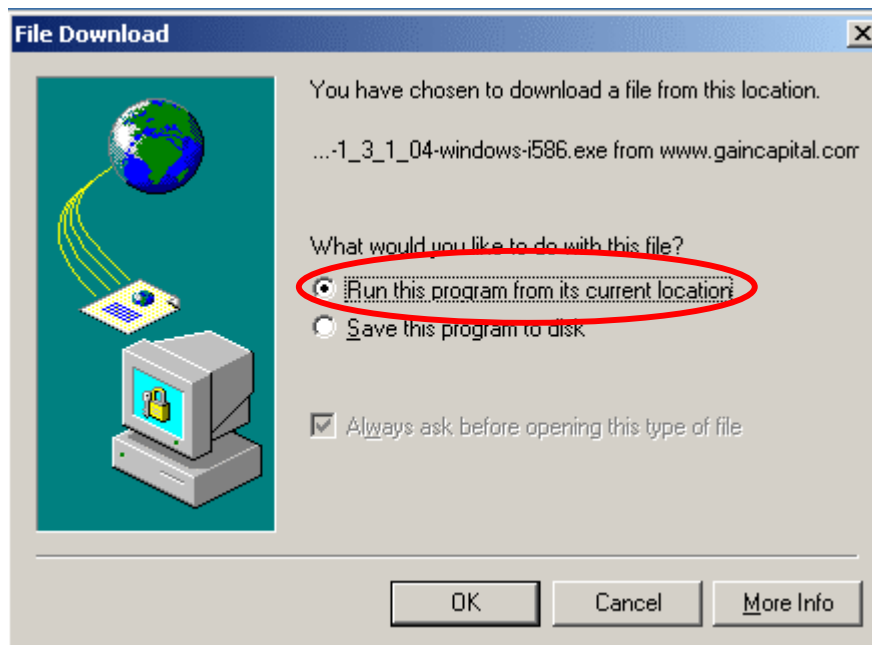
PLEASE CLOSE ALL APPLICATIONS EXCEPT FOR YOUR MAIL PROGRAM BEFORE STARTING THE INSTALLATION.

GAIN CAPITAL STRONGLY ENCOURAGES YOU TO PRINT THESE INSTRUCTIONS BEFORE PROCEEDING.

Click the following URL to start the process:

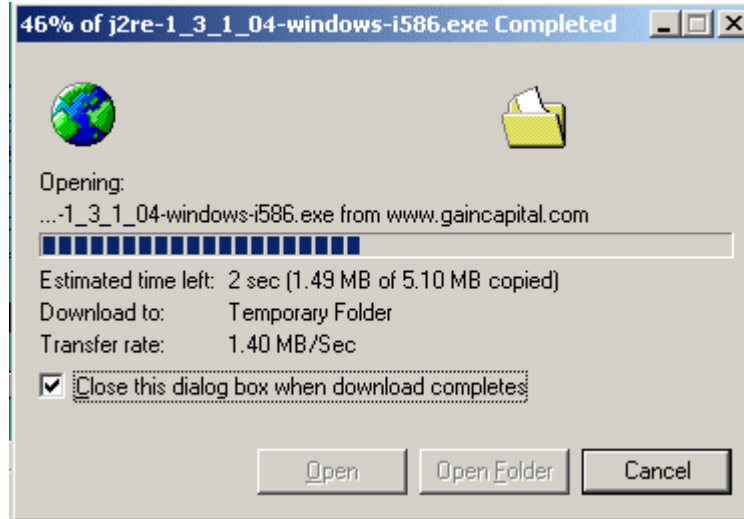
http://www.gaincapital.com/jre/j2re-1_3_1_04-windows-i586.exe

After you CLICK on the URL, you will be prompted to save the installation file “-1_3_1_04-windows-i586.exe” to your computer.

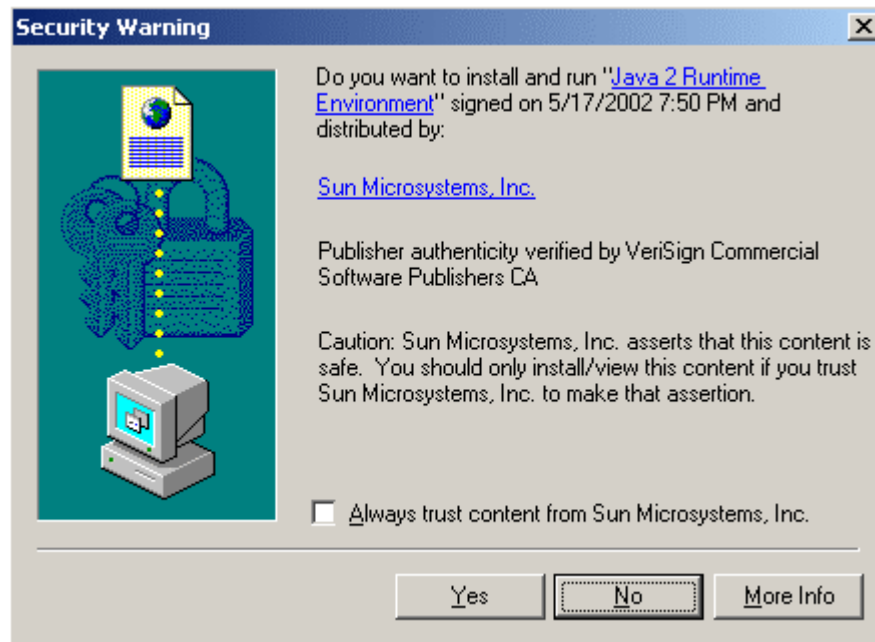


Be sure that the box next to “Run this program from its current location” is indicated. Click “OK”

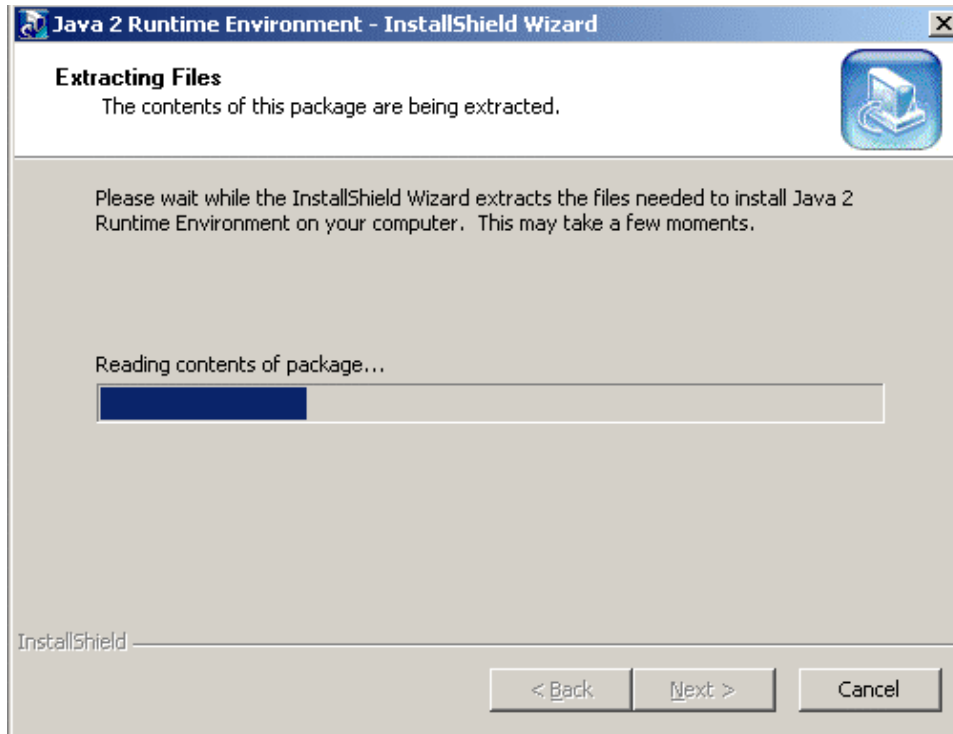
Download will begin



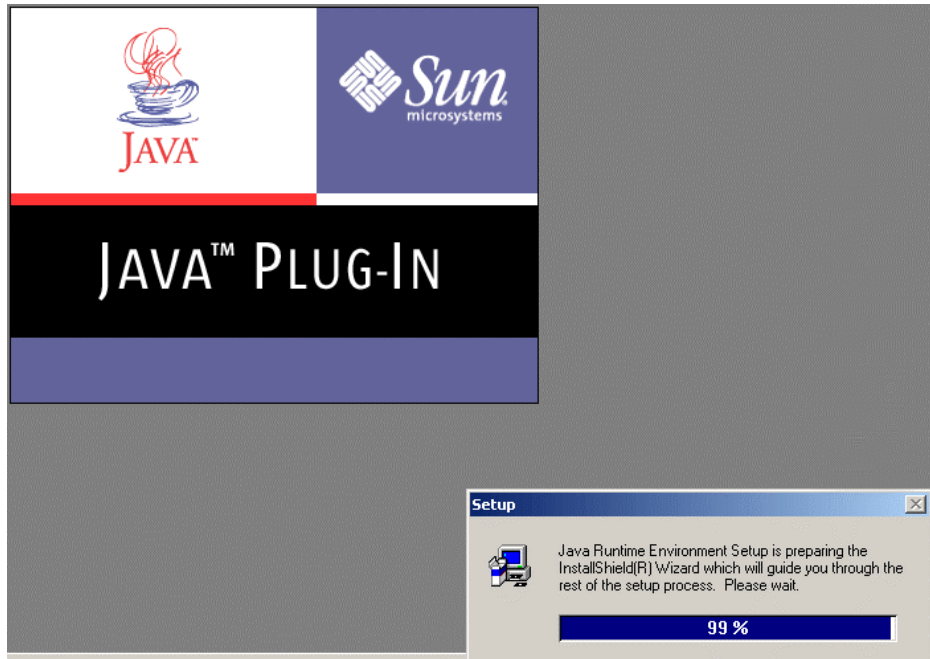
Next you will see a *Security Warning*. Click "**YES**" to continue



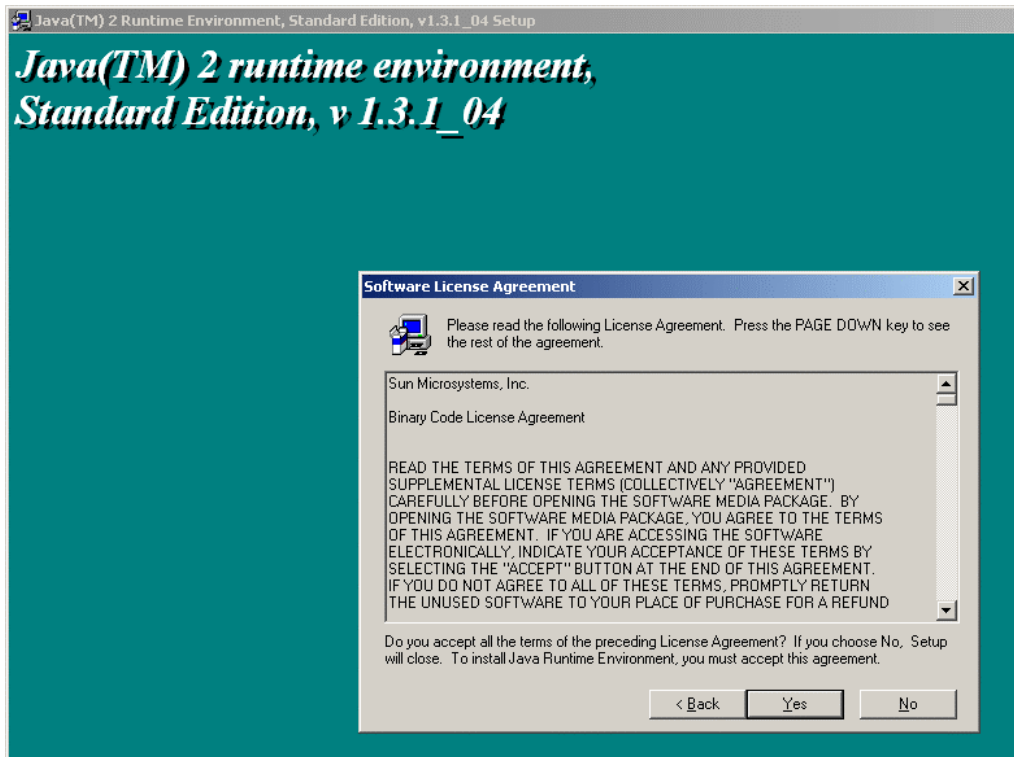
Files will extract, you will see this window next



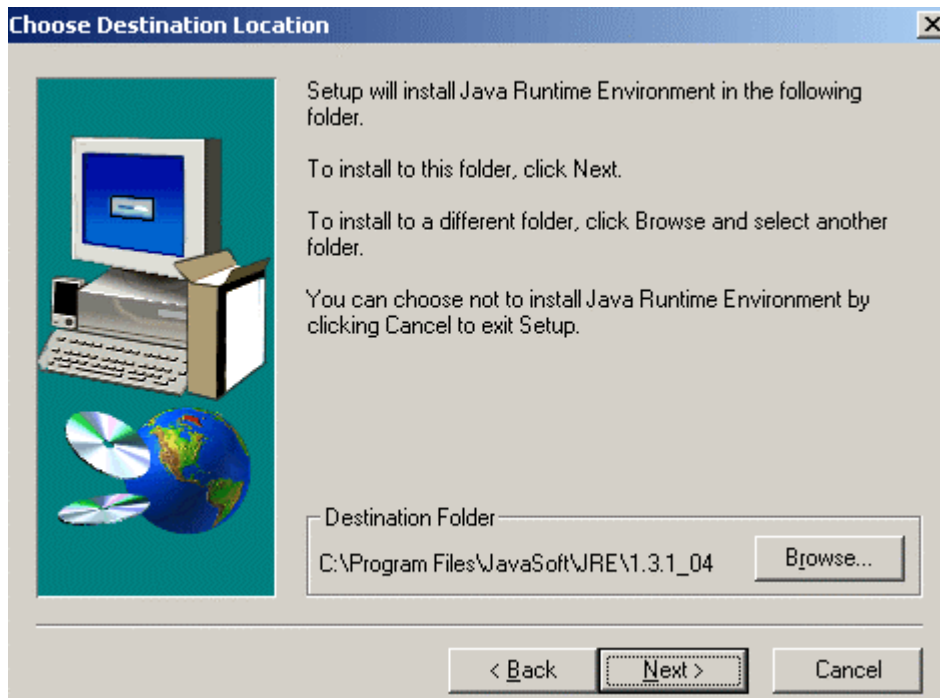
The JAVA install shield will launch and you may see several small images pop up that look similar to this. They will run automatically:



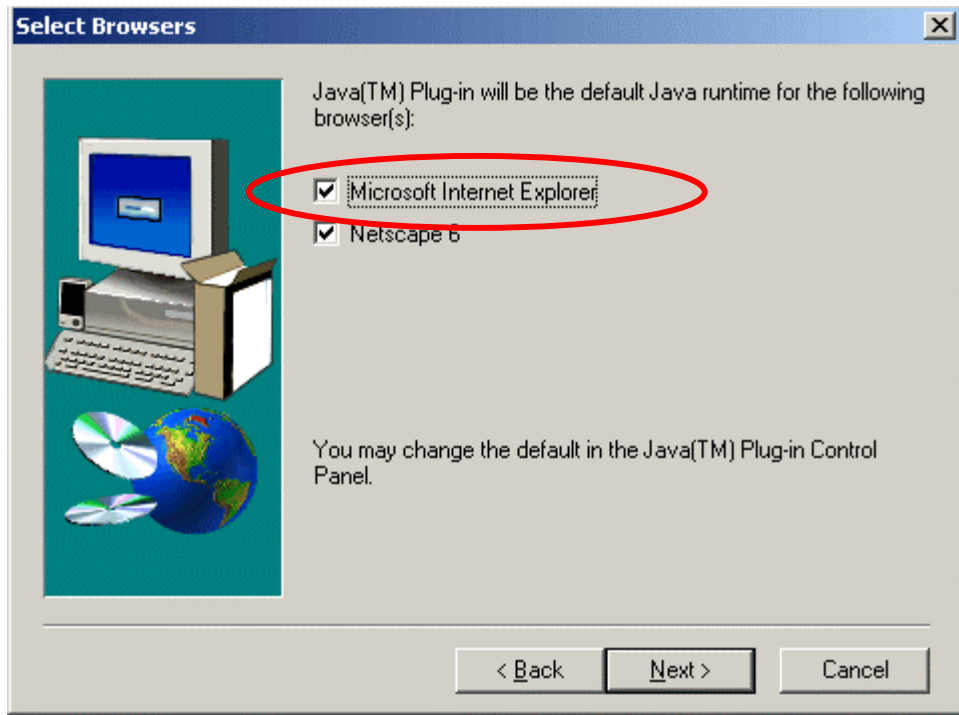
You should then see the *Software License Agreement* window. Click **"YES"**



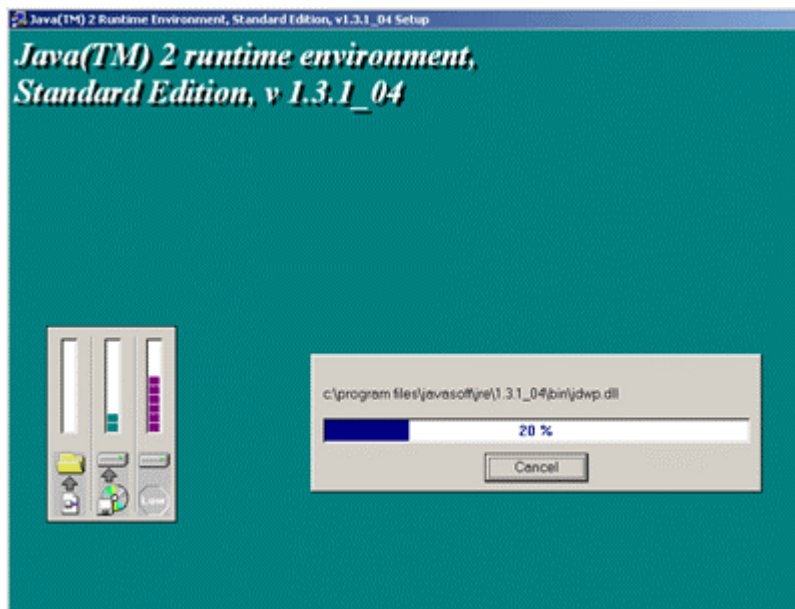
CLICK **"NEXT"** in the *Choose Destination Location* window



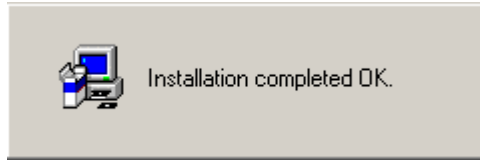
Be sure that "Microsoft Internet Explorer" is checked and then CLICK "**NEXT**" in the *Choose Brower* window



The files will install and you will see the status bars:



When the applet has installed completely you will see this on your screen. It will appear briefly and then it and the install shield will disappear.



Once you have completed the installation process, you are ready to log in to the trading software.

Open your browser, go to <http://www.gaincapital.com/> and click on the login appropriate for your account type (*Login-Demo* OR *Login-Live*). The dealing applet will automatically load, and you will be prompted to enter your User ID and Password.

XXENDXX